

## WRITING HINTS

### HOW TO SIT

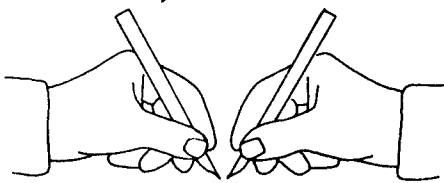
For best results, rest your feet flat on the floor and keep your back comfortably straight. Rest your forearms on the writing surface. A flat surface is adequate for monoline tool writing (pencil, ballpoint, fibertip), but a slanted surface is more comfortable for both monoline and edged pen writing.



Note:  
For long periods of writing, prop up one foot to avoid back fatigue.

### TOOL POSITION

Hold your monoline tool or edged pen with the thumb and index finger, resting it on the middle finger. Rest the shaft of the writing tool near the large knuckle. Hold your tool firmly, but avoid pinching. To relax your hand, tap index finger on tool 3 times. Repeat at intervals.



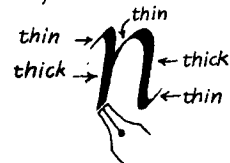
A comfortable hold will result in better writing!

### PAPER POSITION

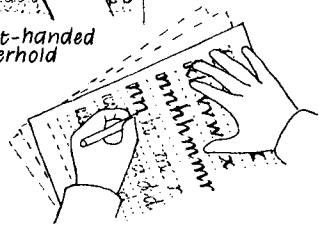
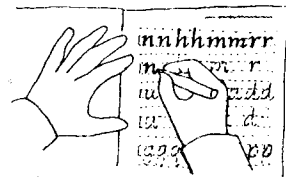
EDGED PEN WRITING • CHAPTERS II-VII and IX

If you are right-handed, keep your book or paper vertical. (See A.) This will allow the pen edge to form the proper thicks & thins as you form the letters.

If you are left-handed, experiment to determine the correct book or paper position. Begin with the book turned 90° clockwise. (See B.) This may be suitable to achieve the proper thicks and thins. If not, try other positions, turning book slightly counter clockwise each time. (See C.)



EDGED PEN POSITION

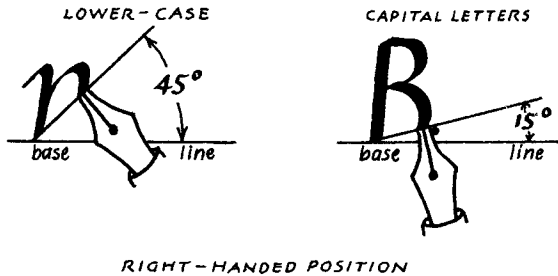


PAPER POSITION FOR EDGED PEN

Position C also may be useful for the left-oblique nib.

**PEN EDGE ANGLE**

The angle of your pen edge to the writing line (base line) determines where the thicks & thins occur.



If you are left-handed, hold your pen comfortably. Then experiment with various paper positions to achieve the proper thicks and thins.

**MATERIALS**

**WRITING TOOLS**

**MONOLINE TOOLS** (Chapters II-V and VIII-X)  
No. 2 pencil, medium or fine fiber-tip pen, or ballpoint.

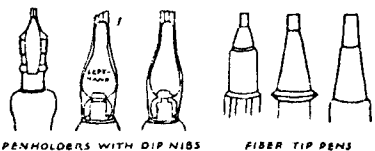
In this book we used Flair pens and Le Pen by Marvy. For the small marginal notes we used the Koh-i-noor Rapidograph pens.

**EDGED PENS** (Chapters II-X)

Any fountain pens or dip nibs similar to the sizes shown below may be used to write in this book.

Edged dip pen nibs are used with an appropriate holder. They include: Brause, Mitchell, and Speedball by Hunt.

In this book, Brause nibs were used for Chapters I and X and all headings. Hunt's Speedball C-0 was used for pp. 104-105.



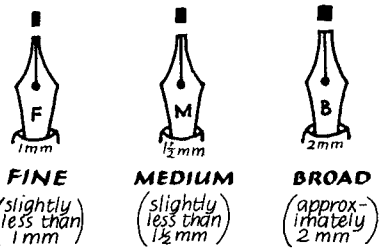
Many edged pens with fiber tips are available, among them: Hunt Elegant Writer Series, Marvy pens by Uchida, and Calligraph Duo by Staedtler.

Edged fountain pens include: Osmiroid, Panache, Parker, Pelikan, Platignum, Rotring & Sheaffer.

**COMPARISON OF PEN SIZES**

**FOUNTAIN PENS**

Fountain pens hold their own ink supply.



**Sheaffer**

Osmiroid	medium	B-2	B-3
Panache	fine (1mm+)	medium	
Parker	fine	medium	broad
Pelikan	1mm	1.5 mm	2 mm
Platignum	medium	B-2	B-3
Rotring	1.1 mm	1.5 mm	1.9 mm

**DIP NIBS**

Dip nibs must be immersed in ink.

Brause	1 mm	1.5 mm	2 mm
Mitchell <sup>ROUND-HAND</sup>	3 1/2 (1mm)	3 (1.4 mm)	2 1/2 (1.8 mm)
Speedball	C-5	C-4	C-3

**FIBER TIP PENS**

Elegant Writer	fine	medium
Marvy		2 mm
Staedtler		2 mm
Callipen (plastic nib)		2 mm

<sup>1</sup> Left-handed nibs are available for some dip nibs and fountain pens. The left-handed nib has a left-oblique edge.

<sup>2</sup> For the practice pages in this book, we used the Sheaffer calligraphy set containing one pen and three nibs: fine, medium and broad.